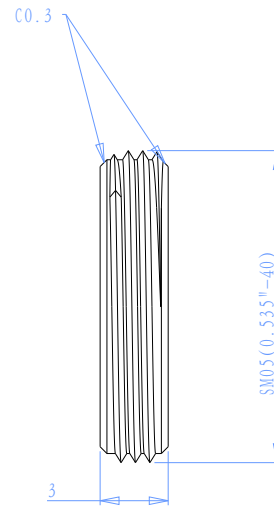
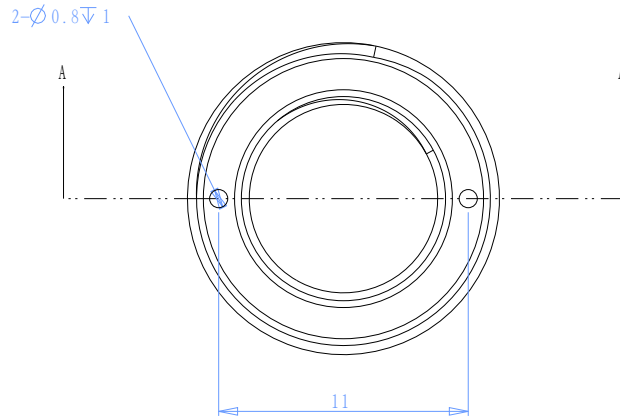
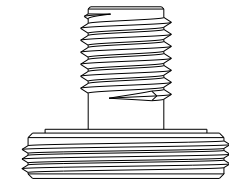
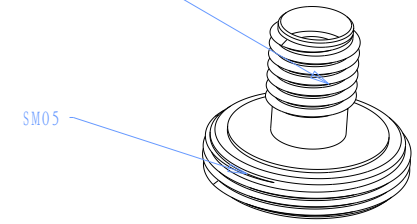


截面 A-A




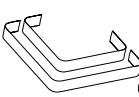
SMA

SM05



技术要求:

1. 材料规格: SUS304+AL6061
2. 外观要求: 表面光洁, 平整, 无碰划伤锐边磨圆, 未注倒角为C0.2
3. 未注公差; 按GB1804-f。
4. 氧化黑色

DRAWING PROJECTION 		 <b>Oeabt</b> Optics Experiment and Basic Teaching		
DATE	14/10/20			
SM05-SMA				
www.Oeabt.com		MATERIAL #		REV
COPYRIGHT © 2020 BY Oeabt				A
VALUE IN PARENTHESIS ARE CALCULATED AND MAY CONTAIN ROUND OFF ERRORS			APPROX WEIGHT	kg